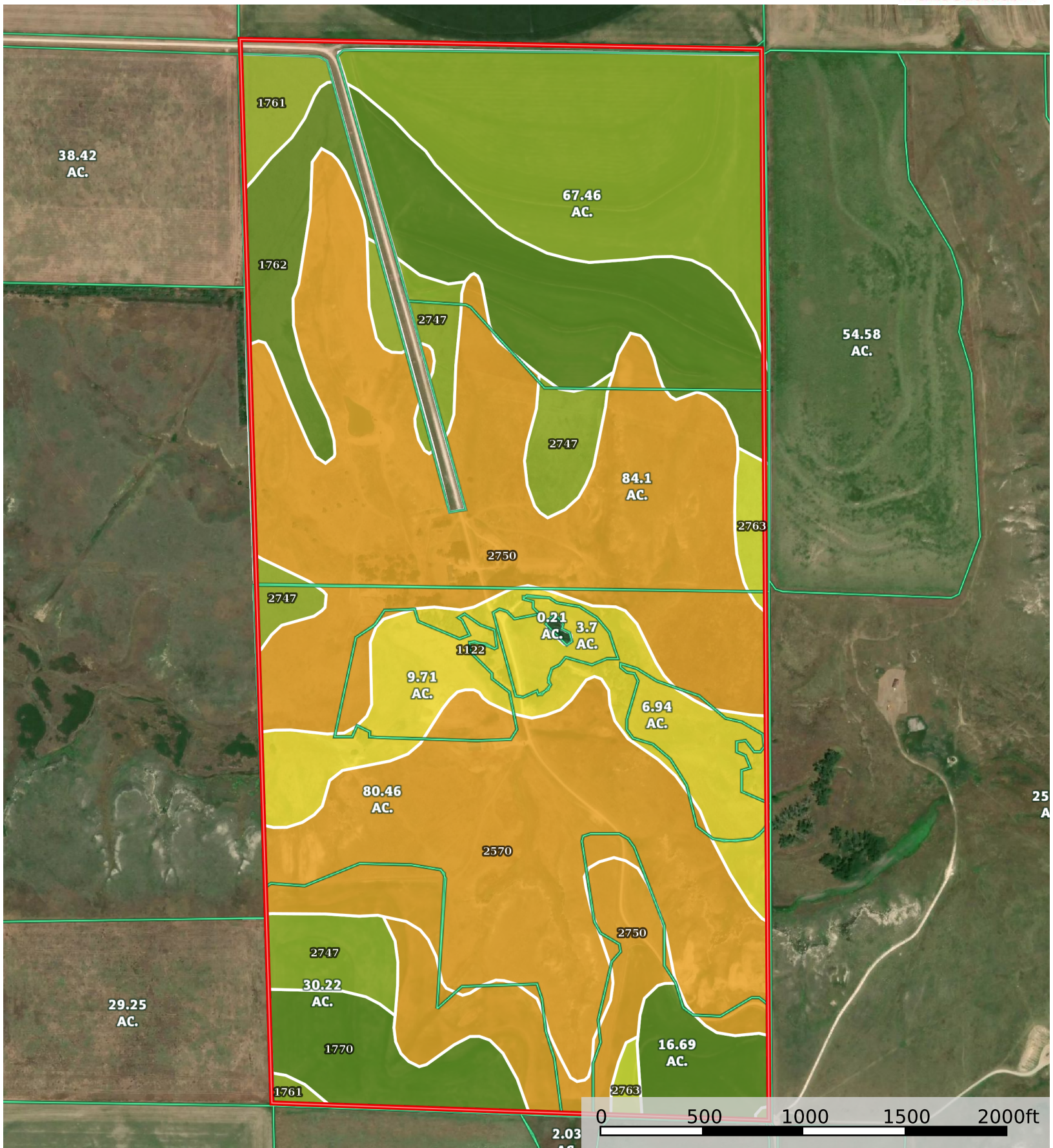


+/- 300 Acres Lane County Land

Lane County, Kansas, 300 AC +/-



Boundary

SOIL CODE	SOIL DESCRIPTION	ACRES	%	CPI	NCCPI	CAP
2750	Penden clay loam, 7 to 15 percent slopes	91.78	30.68	0	60	6e
2570	Canlon-Campus complex, 1 to 40 percent slopes	56.32	18.82	0	22	6s
1761	Richfield silt loam, 0 to 1 percent slopes	45.39	15.17	0	66	3c
1762	Richfield silt loam, 1 to 3 percent slopes	35.94	12.01	0	55	2e
1122	Bridgeport loam, channeled	30.57	10.22	0	41	5w
1770	Richfield-Ulysses silt loams, 1 to 3 percent slopes	18.88	6.31	0	67	2e
2747	Penden clay loam, 3 to 7 percent slopes	16.69	5.58	0	64	3e
2763	Penden-Kim clay loams, 3 to 6 percent slopes, eroded	3.63	1.21	0	61	4e
TOTALS		299.2(*)	100%	-	51.9	4.52

(*) Total acres may differ in the second decimal compared to the sum of each acreage soil. This is due to a round error because we only show the acres of each soil with two decimal.

