

ABSOLUTE AUCTION

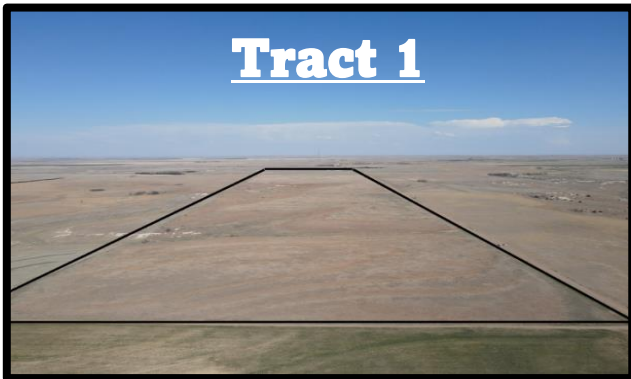
Live & Online

Tuesday May 23. Start Time 10:30 A.M (Central)

Trego County Land

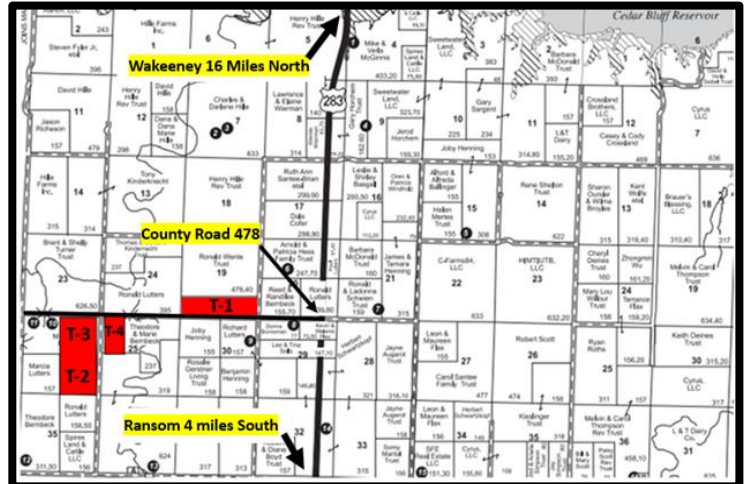
Auction Location: 400 North Railroad. Wakeeney Ks. 67672 Avenue (VFW Building)

Seller: The Estate of Marjorie M. Rohr



Tract 1

S2 of SW ¼ & S2 of SE ¼ of Section 19, T15, R23.
154+/- Acres of Former Cultivation/Expired CRP



Tract 2

SE ¼ of Section 26, T15, R24
159 +/- Acres of Former Cultivation/Expired CRP



Tract 4

W2 of NW ¼ of Section 25, T15, R24.
78+/- Acres of Former Cultivation/Expired CRP



Tract 3

NE ¼ of Section 26, T15, R24.
43 +/- Acres of Pasture & 113 +/- Acres of Former Cultivation/Expired CRP



Tract 5

908 Russell Ave. Wakeeney KS. 67672
2 bed / 1 bath
660 SQF. With a full unfinished basement



Tract 5

Call Nick Nowak for showing dates and times prior to the auction!

For Full Auction Terms & Conditions Visit Our Website @ www.eliterealtyks.com

NICK NOWAK

Listing Agent

(620) 214-1853

Nickn@eliterealtyks.com



Residential-Commercial
700 W 48th St, Hays, KS
Office: 785-621-2100

